



Total Sq Ft: 4,367
Finished Sq Ft: 2,567
Bedrooms: 4-6
Bathrooms: 3-4
Garage: 2
Autumn Leaf Lots:
 2, 8, 10, 11, 13, 14, 16

BRISTLECONE

INTERIOR

- Custom Alder cabinets
- Tile flooring Throughout
- Large casings and baseboards
- Full tile Master Bath and Shower surrounds
- Gas Fireplace with Tile surround
- Soaker tub in master
- Moen faucet fixtures
- Brushed nickel or oil rubbed bronze hardware
- 9' main floor ceilings
- Recessed can lighting
- Two tone interior paint
- Stainless steel, energy efficient appliances
- Granite countertops throughout
- 90% efficient furnace
- 50 gallon water heater

EXTERIOR

- 2x6 exterior wall construction
- Front and side landscaping included w/automated sprinkler system
- Raised Panel Steel Garage Door
- Low E vinyl windows
- Blown in insulation

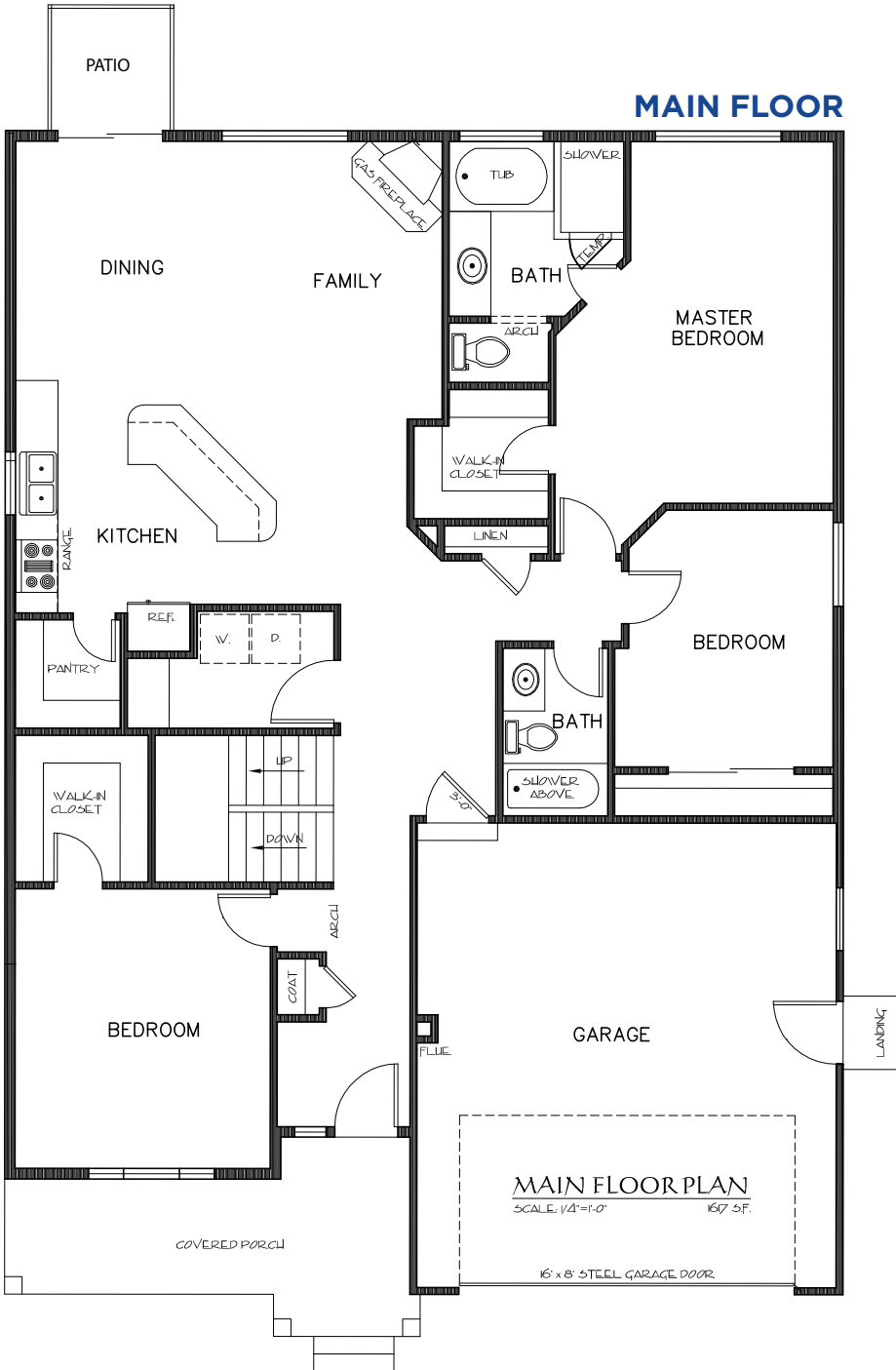


299 South Main Street Suite 2250
 Salt Lake City, Utah 84111
 801.708.6878 | www.BluePineHomes.com

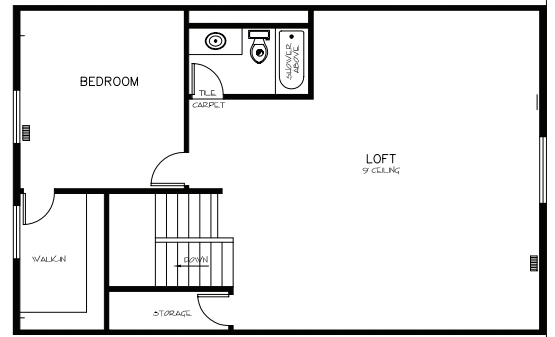
BRISTLECONE

Total Sq Ft: 4,367
Finished Sq Ft: 2,567
Bedrooms: 4-6
Bathrooms: 3-4
Garage: 2
Autumn Leaf Lots:
 2, 8, 10, 11, 13, 14, 16

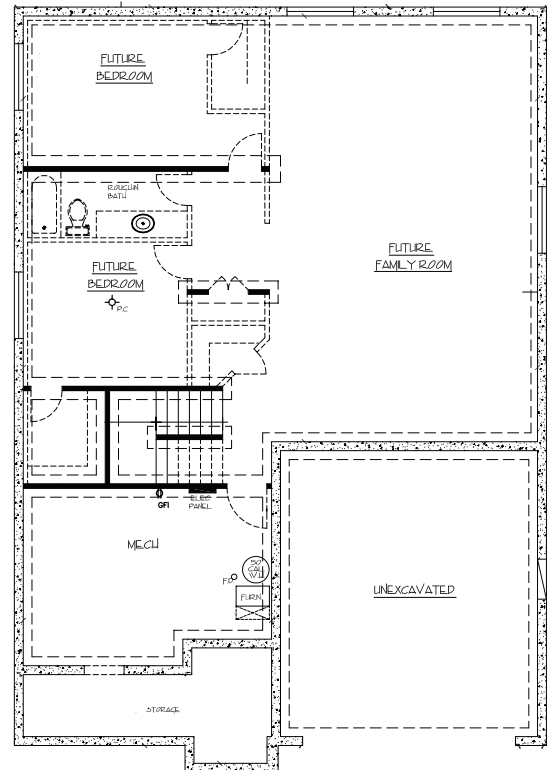
MAIN FLOOR



UPSTAIRS/LOFT



UNFINISHED BASEMENT



299 South Main Street Suite 2250
 Salt Lake City, Utah 84111
 801.708.6878 | www.BluePineHomes.com